

esk rivers and fisheries trust 2009-2012

Promoting partnership | Implementing investment | Compelled by conservation

Biosecurity Projects

Our Biosecurity plan was completed in 2009. Projects include the eradication of Japanese knotweed and Giant hogweed in all catchments



Spraying Sept 2010 Results May 2011 Sparse stunted shoots June 2011

Other non-native species



River Restoration Projects

Bank Stabilisation Studies



Unstable bank Penetrometer Results - depth and substrate resistance

Fish Pass Installation

Fish Passes installed on the Pow Burn and Lunan Water



Rottal Burn Realignment

Canalised since the 1800s, plans for a natural channel were developed in 2011 and are currently being implemented



Forestry

Tree thinning on the Lemno Burn and the Adelinn Burn to reduce shade.



About us

The ERTF was granted charitable status in 2008 and was operational from 2009. The work the Trust undertakes includes scientific monitoring, environmental protection and improvement, research and educational work. It is a member of RAFTS and SFCC.

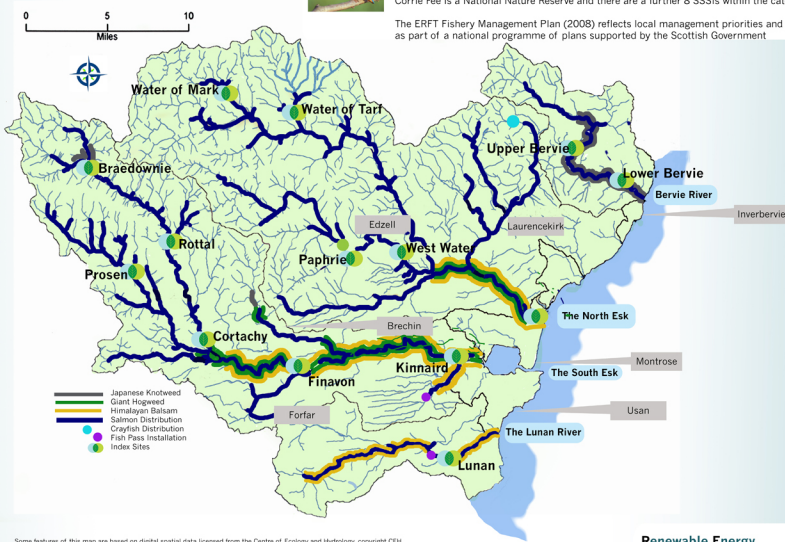
Trust Chairman: Tom Sampson

Trust Director: Dr Marshall Halliday

Website: www.ertf.org.uk Tel: 07769655499

Charity number: SC037764

The ERTF wishes to acknowledge the following partners:



Some features of this map are based on digital spatial data licensed from the Centre of Ecology and Hydrology, copyright CEH

2009-2012

Originating in the Cairngorms, with a combined catchment area of 1500km squared, the North Esk and South Esk are renowned for their sea trout and salmon as well as a diverse range of wildlife. The North Esk has 5 SSSIs and the South Esk is a European-designated SAC for the Atlantic Salmon and the Fresh Water Pearl Mussel. Montrose Basin is a Ramsar site, Special Protection Area (SPA) and SSSI. Caen Lochan is an SAC, SPA and SSSI. Corrie Fee is a National Nature Reserve and there are a further 8 SSSIs within the catchment.

The ERTF Fishery Management Plan (2008) reflects local management priorities and was prepared after consultation as part of a national programme of plans supported by the Scottish Government

Education

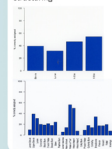
Involve local schools, universities and local communities



Adult stock analysis indicates a deterioration in spring fish numbers in the second cycle. Fresh water pearl mussels continue to decline.

Salmon Genetics: FASMAP project

Genetic analysis provides some evidence of population structuring



Renewable Energy

Renewable Energy Development Proposals
Wind farms: Michill (Bervie Water),
Glen Markie/Isle and Nathro (South Esk)



Offshore Wind Farms:
Development proposed
30km off the Angus coast



Water Turbines: Montrose (South Esk)
Hydro Schemes: Brandy and Rottal Burns,
Glen Ogil and Cullen Haugh (South Esk)
Quarries: Struan Farm (North Esk)